

# Lithium Battery -AGV Series

## AP48-210



### Features Of LiFePO4 Battery

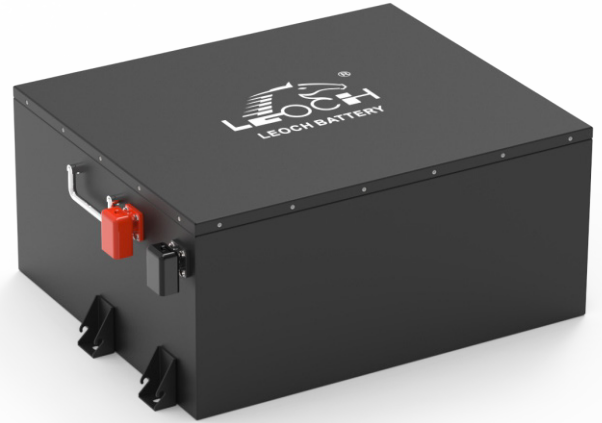
- Long cycle life
- High integration, small size, high energy density
- Intelligent management of product usage status with high security
- Environmental protection
- Capable of 1C fast charging

### Application scenarios

- Electric motorcycle
- Electric bicycles
- Electric tricycle
- Small motor vehicles

### Specification

Nominal Voltage	48V
Working Voltage	37.5-54.75V
Nominal Capacity	210Ah
Energy	10080Wh
Self Discharge	≤3% Per Month
IP Grade	IP54
Positive material	Lithium ironphosphate
Cell type	Prismatic
Combination method	105Ah 2P155
Weight	ABOUT 85.0KG
Dimension LxWxH	L454*W539*H250mm
Fixed size	NO
Terminal Type	M8 Terminal Bolts,12+2N.m
Shell type	Powder Coated Steel
Handle	YES
Storage Temp. short term	-20-45°C
Storage Temp. long term	0-35°C
Cycle Life	5000 cycles
Heating function	No
Cooling type	No
Insulation	20MΩ/1000VDC, @25±5 C., RH50%



### Charging

Recom. Charging Current	100A
Upper limit voltage	54.75V
Charging Temp. Range	0~65°C

### DisCharging

Max Continuous Discharge	200A
Max Discharge current	300A@1S
Lower limit voltage	37.5V
BMS Voltage Recovery	42V
Discharge Temp. Range	-35-65°C

### Function (optional)

(CAN/RS485), Bluetooth, 4G, Screen, Charger

### Physical Dimension-mm

